



Band Strap Clamps

HYDAC offers customized series strips and tank mounting band strap solutions for OEM's requiring multiple line runs. In addition we provide a rugged, high durability power cable harness for cable management requirements. Ciist quas reriae culparit volo vitio. Ibus, sintium namus.

Genis aut quam eatur, nitatur? Ipsuntu ribusam, volori ratemod ma aut quiae omnihic tet landitatur.

BAND STRAP CLAMPS

HR(S)GBLPU Series

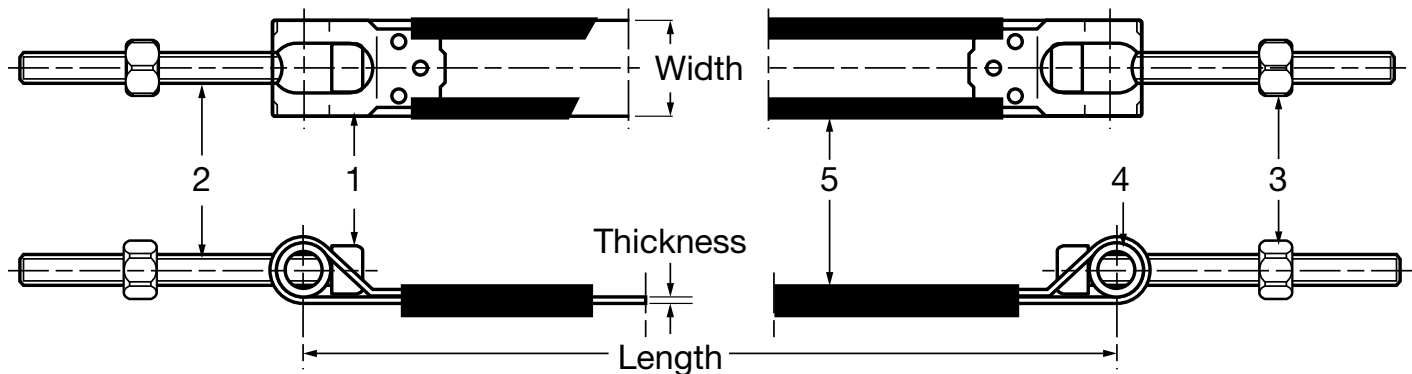
Swivel Bolt Band Clamps



Description

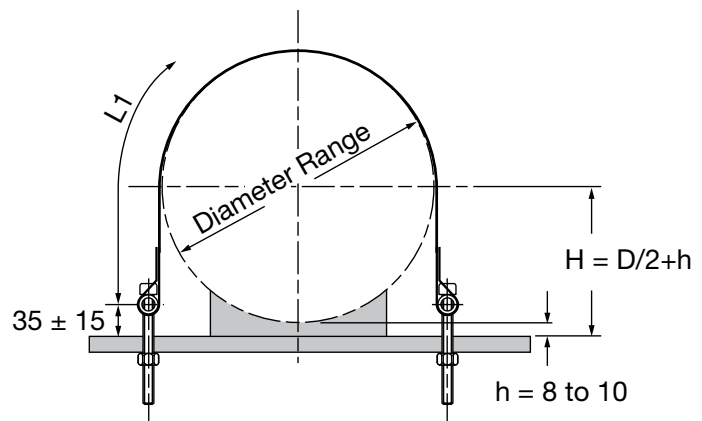
For OEM's requiring mounting solutions to secure non-cylindrical objects such as plastic fuel tanks, HYDAC offers steel band straps.

Item	Description/Material
1	Clamping Band, Stainless Steel
2	Metric Zinc-Plated Steel Socket Head Bolts (<i>Note: other bolt and connection styles are available based on customer's specifications</i>)
3	Nuts, Zinc Plated Steel
4	Swivel Sleeve, Zinc Plated Steel
5	Rubber Profile



Dimensions

	Width x Thickness	Length Range (L1)
Light Range	25 x 1	187 - 921 mm
Heavy Range	30 X 1	232 - 1511 mm
Heavy II Range	30 X 1.5	232 - 1511 mm



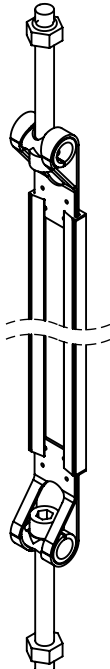
Ordering

Band Straps are a custom product which must be quoted on an individual project basis. Band Straps are available with various lengths, widths, connecting hardware, and with or without rubber profiles. Contact **HYDAC** at **1-877-GO HYDAC** (1.877.464.9322) with your specifications to request a quotation.

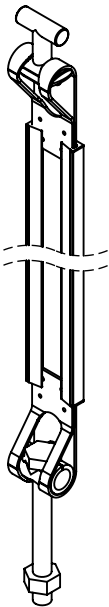
Head Bolt Arrangements



A1



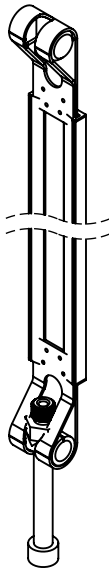
B1



A1HB



B1HB



S1

Parts Legend

- | | |
|--------------------|------------------|
| 1 Hex Head Bolt | 5 Swivel Sleeve |
| 2 Socket Head Bolt | 6 Hex Head Nut |
| 3 Steel Band | 7 H-Bolt |
| 4 Band Profile | 8 Locking Sleeve |

Model Code

Series	HR	SG	BL	PU	30	A1	373	ST
<p>HRGBLPU = 25 x 1 / 30 x 1 HRSGBLPU = 30 x 1.5 / 40 x 1.5</p>								
Band Width (mm)	25, 30, 40							
Hardware	A1 = Metric Hex Head Bolts B1 = Metric Socket Head Bolts A1HB = Metric Hex Head Bolt w/ H-Bolt B1HB = Metric Socket Head Bolt w/ H-Bolt S1 = 360° Clamp Arrangement, Metric Socket Head Bolt							
Type	(Refer to table on next page)							
Material of Metal Components	ST = Carbon Steel A2 = 304 Stainless Steel							
Material of Profile	(omit) = EPDM NBR = Nitrile (Buna)							

BAND STRAP CLAMPS

Dimensions

A1 and B1 -

Band width 1" (25mm)

Type	L1	Diameter Range
64	7.4 (187)	3 - 3.3 (77 - 83)
70	8.1 (206)	3.3 - 3.5 (84 - 90)
76	8.8 (224)	3.6 - 3.9 (91-98)
82	9.5 (242)	3.9-4.2 (98 -106)
88	10.2 (260)	4.1 - 4.6 (105 - 118)
94	11 (279)	4.4 - 4.9 (112 - 125)
100	11.7 (297)	4.7 - 5.4 (119 - 136)
106	12.4 (316)	5 - 5.7 (127 - 145)
115	13.5 (343)	5.4 - 6.1 (137 - 156)
120	14.1 (358)	5.6 - 6.3 (143 - 161)
124	14.6 (371)	5.8 - 6.5 (148 - 166)
133	15.7 (399)	6.3 - 7 (159 - 177)
142	16.8 (427)	6.7 - 7.4 (170 - 188)
151	17.9 (455)	7.1 - 7.8 (181 - 199)
160	19 (483)	7.6 - 8.3 (192 - 210)
169	20.1 (511)	8 - 8.7 (203 - 221)
178	21.2 (539)	8.4 - 9.1 (214 - 232)
187	22.3 (567)	8.9 - 9.6 (225 - 243)
196	23.3 (591)	9.3 - 10 (236 - 254)
205	24.5 (623)	9.7 - 10.4 (247 - 265)
214	25.6 (651)	10.2 - 10.9 (258 - 276)
223	26.7 (679)	10.6 - 11.3 (269 - 287)
231	27.7 (704)	10.9 - 11.7 (278 - 296)
234	28.1 (713)	11.1 - 11.8 (281 - 299)
241	28.9 (735)	11.4 - 12.1 (290 - 308)
250	30.1 (764)	11.9 - 12.6 (301 - 319)
259	31.2 (792)	12.3 - 13 (312 - 330)
268	32.3 (820)	12.7 - 13.4 (323 - 341)
277	33.4 (849)	13.1 - 13.9 (334 - 352)
286	34.5 (877)	13.6 - 14.3 (345 - 363)
295	35.6 (905)	14 - 14.7 (356 - 374)
300	36.3 (921)	14.3 - 15 (363 - 382)

Dimensions

A1 and B1 -

Band width 1.2" (30mm) / 1.6" (40 mm)

Type	L1	Diameter Range
80	9.1 (232)	3.8 - 4.2 (96 - 106)
89	10.2 (260)	4.2 - 4.6 (107 - 116)
98	11.3 (287)	4.6 - 5 (117 - 127)
107	12.4 (315)	5 - 5.4 (128 - 138)
116	13.5 (342)	5.5 - 5.9 (139 - 150)
125	14.6 (370)	5.9 - 6.6 (150 - 168)
134	15.7 (398)	6.3 - 7.2 (161 - 183)
143	16.8 (426)	6.8 - 7.6 (172 - 194)
152	17.9 (454)	7.2 - 8.1 (183 - 205)
165	19.4 (494)	7.8 - 8.7 (198 - 221)
178	21 (534)	8.4 - 9.3 (213 - 236)
191	22.6 (575)	9 - 9.9 (229 - 252)
204	24.2 (615)	9.6 - 10.6 (245 - 268)
217	25.8 (656)	10.3 - 11.2 (261 - 284)
230	27.4 (696)	10.9 - 11.8 (276 - 299)
243	29 (737)	11.5 - 12.4 (292 - 315)
256	30.6 (777)	12.1 - 13 (308 - 331)
269	32.2 (818)	12.8 - 13.7 (324 - 347)
282	33.8 (859)	13.3 - 14.3 (339 - 362)
295	35.4 (900)	14 - 14.9 (355 - 378)
300	36.1 (916)	14.3 - 15.2 (363 - 386)
308	37 (941)	14.6 - 15.5 (371 - 394)
321	38.6 (981)	15.2 - 16.1 (387 - 410)
334	40.2 (1022)	15.9 - 16.8 (403 - 426)
347	41.9 (1063)	16.5 - 17.4 (419 - 442)
360	43.4 (1103)	17.1 - 18 (434 - 457)
373	45 (1144)	17.7 - 18.6 (450 - 473)
386	46.7 (1185)	18.3 - 19.3 (466 - 489)
399	48.2 (1225)	19 - 19.9 (482 - 505)
412	49.8 (1266)	19.5 - 20.5 (496 - 521)
425	51.5 (1307)	20.2 - 21.1 (513 - 537)
438	53.1 (1348)	20.8 - 21.8 (529 - 553)
451	54.6 (1388)	21.5 - 22.4 (545 - 568)
464	56.3 (1429)	22.1 - 23 (561 - 584)
477	57.9 (1470)	22.7 - 23.6 (577 - 600)
490	59.5 (1511)	23.3 - 24.3 (593- 616)

Dimensions

S1 -

Band width 1" (25mm)

Type	L1	Diameter Range
62	7.1 (181)	2.1 - 2.3 (54 - 59)
64	7.4 (187)	2.2 - 2.4 (56 - 61)
70	8.1 (206)	2.4 - 2.6 (62 - 67)
76	8.8 (224)	2.7 - 2.9 (68 - 73)
82	9.5 (242)	2.9 - 3.1 (74 - 79)
88	10.2 (260)	3.1 - 3.3 (80 - 85)
94	11 (279)	3.4 - 3.6 (86 - 91)
100	11.7 (297)	3.6 - 3.8 (92 - 97)
106	12.4 (316)	3.9 - 4.2 (98 - 106)
115	13.5 (343)	4.2 - 4.5 (107 - 115)
124	14.6 (371)	4.6 - 4.9 (116 - 124)
133	15.7 (399)	4.9 - 5.2 (125 - 133)
142	16.8 (427)	5.3 - 5.6 (134 - 142)
151	17.9 (455)	5.6 - 5.9 (143 - 151)
160	19 (483)	6 - 6.3 (152 - 160)
169	20.1 (511)	6.3 - 6.7 (161 - 169)
178	21.2 (539)	6.7 - 7 (170 - 178)
187	22.3 (567)	7 - 7.4 (179 - 187)
196	23.4 (595)	7.4 - 7.7 (188 - 196)
205	24.5 (623)	7.8 - 8.1 (197 - 205)
214	25.6 (651)	8.1 - 8.4 (206 - 214)
223	26.7 (679)	8.5 - 8.8 (215 - 223)
231	27.7 (704)	8.8 - 9.1 (224 - 232)
241	28.9 (735)	9.2 - 9.5 (233 - 241)
250	30.1 (764)	9.5 - 9.8 (242 - 250)
259	31.2 (792)	9.9 - 10.2 (251 - 259)
268	32.3 (820)	10.2 - 10.6 (260 - 268)
277	33.4 (849)	10.6 - 10.9 (269 - 277)
286	34.5 (877)	10.9 - 11.3 (278 - 286)
295	35.6 (905)	11.3 - 11.6 (287 - 295)

Dimensions

S1 -

Band width 1.2" (30mm) / 1.6" (40 mm)

Type	L1	Diameter Range
80	9.1 (232)	2.8 - 3 (71 - 76)
89	10.2 (260)	3.1 - 3.3 (80 - 85)
98	11.3 (287)	3.5 - 3.7 (89 - 94)
107	12.4 (315)	3.9 - 4.1 (98 - 103)
116	13.5 (342)	4.2 - 4.5 (107 - 115)
125	14.6 (370)	4.6 - 4.9 (116 - 124)
134	15.7 (398)	4.9 - 5.2 (125 - 133)
143	16.8 (426)	5.3 - 5.6 (134 - 142)
152	17.9 (454)	5.6 - 5.9 (143 - 151)
165	19.4 (494)	6.1 - 6.5 (156 - 164)
178	21 (534)	6.7 - 7 (169 - 177)
191	22.6 (575)	7.2 - 7.5 (182 - 190)
204	24.2 (615)	7.7 - 8 (195 - 203)
217	25.8 (656)	8.2 - 8.5 (208 - 216)
230	27.4 (696)	8.7 - 9 (221 - 229)
243	29 (737)	9.2 - 9.6 (234 - 245)
256	30.6 (777)	9.7 - 10.2 (247 - 258)
269	32.2 (818)	10.2 - 10.7 (260 - 271)
282	33.8 (859)	10.7 - 11.2 (273 - 284)
295	35.4 (900)	11.3 - 11.7 (286 - 297)
300	36.1 (916)	11.5 - 11.9 (291 - 302)
308	37 (941)	11.8 - 12.2 (299 - 310)
321	38.6 (981)	12.3 - 12.7 (312 - 323)
334	40.2 (1022)	12.8 - 13.2 (325 - 336)
347	41.9 (1063)	13.3 - 13.7 (338 - 349)
360	43.4 (1103)	13.8 - 14.3 (351 - 362)
373	45 (1144)	14.3 - 14.8 (364 - 375)
386	46.7 (1185)	14.8 - 15.3 (377 - 388)
399	48.2 (1225)	15.4 - 15.8 (390 - 401)
412	49.8 (1266)	15.9 - 16.3 (403 - 414)
425	51.5 (1307)	16.4 - 16.8 (416 - 427)
438	53.1 (1348)	16.9 - 17.3 (429 - 440)
451	54.6 (1388)	17.4 - 17.8 (442 - 453)
464	56.3 (1429)	17.9 - 18.3 (455 - 466)
477	57.9 (1470)	18.4 - 18.9 (468 - 479)
490	59.5 (1511)	18.9 - 19.4 (481 - 492)
503	61.1 (1552)	19.4 - 19.9 (494 - 505)

BAND STRAP CLAMPS

HRGKSM Series

Quick Release Swivel Bolt Clamps



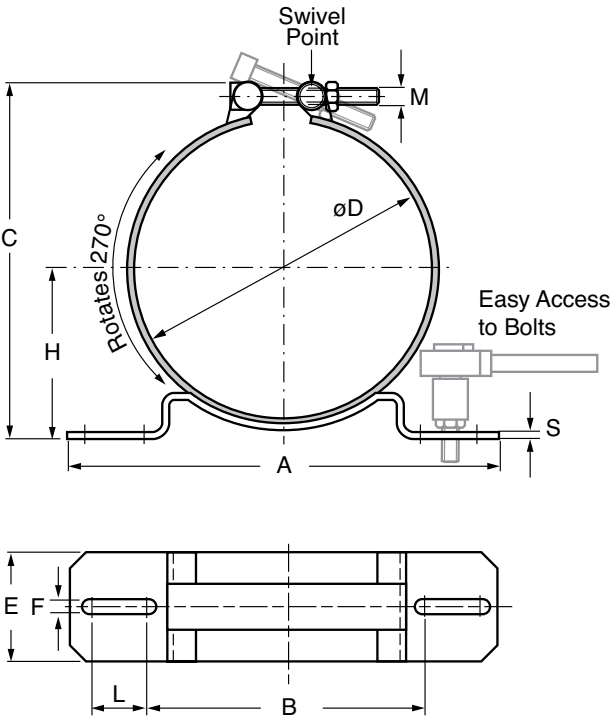
Description

The HRGKS is a clamp designed to mount cylindrical components. It is similar to the HYDAC HYRAC clamp, which is designed for accumulators, with some additional benefits that make it more practical for non-accumulator applications.

Features

- Swivel assembly provides for simple installation and a tight fit
- Support base provides easy access to bolts / unit easy to install
- The clamp rotates ~270°F / Easy access
- Polyethylene profile does not compress
Clamp stays tight over time

Dimensions



Model Code

Model Code

HRGKSM 2 R 186-194 192 ST

Series _____
HRGKSM

Group _____
0-4 (Refer to table)

Model _____
R

Diameter Range _____
(Refer to table)

Type _____
(Refer to table)

Material of Steel Part _____
ST = Zinc Plated Steel

HRGKSM vs. HYRAC*

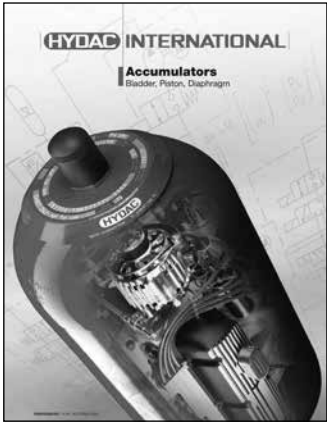
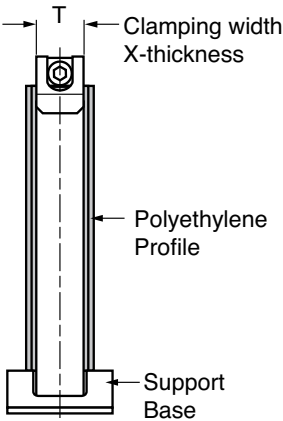
Difference	HRGKSM	HYRAC
Profile Material	Polyethylene	Rubber
Capability to Rotate	Can be rotated 270°F	Fixed at 90°F
Fit in clamp	Component sits flat	Two nubs ensure H dimension is consistent with other HYDAC Accumulator Clamps

*HYRAC clamp sizes 96-100 and under have the same construction as the HRGKSM Series

Materials

Description	Material / Coating
Support Base	Zinc Plated Steel
Polyethylene Profile	Polyethylene
Quick Release Swivel Bolt	Zinc-Plated Steel
Band Strap	Stainless Steel

Also available in all stainless steel



For more detailed information on the HYRAC Clamps please refer to the HYDAC Accumulator Catalog

Dimensions

HRGKSM Series (see illustration previous page)

Group	Diameter Range	Type	Dimensions										Weight
			H	C _{MAX}	A	S	L	B	E	F	M	T	
0	1.7-1.8 (44-46)	47	1.2-1.3 (29.8-32.3)	2.6 (67)	4.72 (120)	0.12 (3)	.31 (8)	3.35 (85)	1.57 (40)	0.35 (9)	M6 x 50	0.8 x .03 (20 x 0.8)	.33 (0.15)
	1.8-1.9 (46-49)	50	1.2-1.3 (30.8-32.3)	2.7 (69)									.33 (0.15)
	2.0-2.1 (51-54)	55	1.3-1.4 (33.3-34.8)	2.9 (75)									.33 (0.15)
	2.2-2.3 (55-58)	59	1.4-1.5 (35.3-36.8)	3.0 (77)									.35 (0.16)
	2.3-2.4 (58-61)	62	1.5 (37.3-38.8)	3.3 (83)									.35 (0.16)
	2.4-2.6 (62-65)	65	.3-1.6 (8.0-39.5)	3.4 (85)									.44 (0.20)
	2.6-2.7 (66-69)	69	1.6 (40.0-41.5)	3.5 (89)									.46 (0.21)
	2.8-2.9 (70-73)	73	1.7 (42.0-43.5)	3.7 (93)									.46 (0.21)
	2.9-3.0 (73-76)	76	1.7-1.8 (43.5-45.0)	3.8 (96)									.48 (0.22)
	3.0-3.1 (77-80)	80	1.8-1.9 (45.5-47.0)	3.9 (100)									.48 (0.22)
	3.2-3.3 (81-84)	85	1.9 (47.0-48.5)	4.1 (104)									.51 (0.23)
	3.3-3.5 (85-88)	89	1.9-2.0 (49.0-50.5)	4.3 (108)									.51 (0.23)
	3.5-3.6 (89-92)	9	2.0-2.1 (51.0-52.5)	4.4 (112)									.53 (0.24)
	3.6-3.7 (92-95)	96	2.1 (52.5-54.0)	4.5 (115)									.53 (0.24)
	3.7-3.9 (95-100)	100	2.1-2.2 (54.5-56.5)	4.7 (120)									.53 (0.24)
1	4.0-4.3 (101-109)	106	2.3-2.5 (58.5-62.5)	5.4 (137)	6.14 (156)	0.12 (3)	0.71 (18)	3.94 (100)	1.97 (50)	0.35 (9)	M8 x 80	1.0 x .03 (25 x 1.0)	.75 (0.34)
	4.3-4.6 (110-118)	115	2.5-2.6 (63.0-67.0)	5.7 (146)									.77 (0.35)
	4.7-5.0 (119-127)	124	2.6-2.8 (66.8-70.8)	6.1 (154)									.79 (0.36)
	5.0-5.4 (128-136)	133	2.8-3.0 (71.3-75.3)	6.4 (163)									.82 (0.37)
	5.4-5.7 (137-145)	142	3.0-3.1 (76.0-80.0)	6.8 (172)									.84 (0.38)
	5.7-6.1 (146-154)	151	3.2-3.3 (80.5-84.5)	7.1 (181)									.86 (0.39)
	6.1-6.4 (155-163)	160	3.3-3.5 (85.0-89.0)	7.5 (190)									.88 (0.40)
2	6.4-6.7 (163-171)	169	3.5-3.7 (90.1-94.1)	7.9 (200)	9.30 (236)	0.12 (3)	1.26 (32)	5.98 (152)	2.36 (60)	0.35 (9)	M8 x 80	1.0 x .03 (25 x 1.0)	1.26 (0.57)
	6.6-6.9 (167-175)	173	3.6-3.8 (92.1-96.1)	8.0 (204)									1.28 (0.58)
	6.8-7.1 (172-180)	178	3.7-3.9 (94.6-98.6)	8.2 (209)									1.28 (0.58)
	7.1-7.4 (181-189)	187	3.9-4.0 (98.4-102.4)	8.5 (217)									1.30 (0.59)
	7.3-7.6 (186-194)	192	4.0-4.1 (100.9-104.9)	8.7 (222)									1.32 (0.60)
	7.5-7.8 (190-198)	196	4.1-4.2 (102.9-106.9)	8.9 (226)									1.32 (0.60)
	7.8-8.1 (199-207)	205	4.2-4.4 (107.4-111.4)	9.2 (235)									1.34 (0.61)
	8.2-8.5 (208-216)	214	4.4-4.5 (111.2-115.2)	9.6 (243)									1.37 (0.62)
	8.5-8.9 (217-225)	223	4.6-4.7 (115.7-119.7)	9.9 (252)									1.39 (0.63)
3	8.9-9.2 (226-234)	231	4.7-4.9 (120.2-124.2)	10.3 (261)	11.81 (300)	0.16 (4)	1.26 (32)	8.43 (214)	2.36 (60)	0.43 (11)	M10 x 90	1.2 x .03 (30 x 1.0)	1.41 (0.64)
	9.3-9.7 (235-246)	243	5.1-5.3 (129.0-134.5)	11.0 (279)									2.14 (0.97)
	9.8-10.2 (24-259)	256	5.3-5.6 (135.5-141.0)	11.5 (292)									2.18 (0.99)
	10.3-10.7 (261-272)	269	5.5-5.8 (140.9-146.4)	12.0 (304)									2.20 (1.00)
	10.7-11.2 (271-285)	282	5.8-6.0 (147.4-152.9)	12.5 (317)									2.25 (1.02)
	11.3-11.7 (287-298)	295	6.1-6.3 (153.9-159.4)	13.0 (330)									2.27 (1.03)
	11.8-12.2 (300-311)	308	6.3-6.5 (159.4-164.9)	13.5 (342)									2.31 (1.05)
	12.3-12.6 (313-324)	321	6.5-6.7 (165.9-171.4)	14.0 (355)									2.34 (1.06)
4	12.8-13.3 (326-337)	334	6.8-7.0 (172.4-177.9)	14.5 (368)	15.75 (400)	0.16 (4)	1.26 (32)	12.36 (314)	2.36 (60)	0.43 (11)	M10 x 90	1.2 x .06 (30 x 1.5)	2.38 (1.08)
	13.3-13.8 (339-350)	347	7.1-7.4 (181.2-186.7)	15.2 (385)									3.24 (1.47)
	13.9-14.3 (352-363)	360	7.4-7.6 (187.7-193.2)	15.7 (398)									3.28 (1.49)
	14.4-14.8 (365-376)	373	7.6-7.9 (194.2-199.7)	16.2 (411)									3.33 (1.51)
	14.9-15.3 (378-389)	386	7.9-8.1 (200.7-206.2)	16.7 (424)									3.35 (1.52)
	15.4-15.8 (391-402)	399	8.1-8.3 (205.2-210.7)	17.1 (435)									3.40 (1.54)
	15.9-16.3 (404-415)	412	8.3-8.6 (211.7-217.2)	17.6 (448)									3.44 (1.56)
	16.4-16.8 (417-428)	425	8.6-8.8 (218.2-223.7)	18.1 (461)									3.48 (1.58)
	16.9-17.4 (430-441)	438	8.8-9.1 (224.7-230.2)	18.7 (474)									3.53 (1.60)
	17.4-17.9 (443-454)	451	9.0-9.2 (229.4-234.9)	19.1 (485)									3.57 (1.62)
	18.0-18.4 (456-467)	464	9.3-9.5 (235.9-241.4)	19.6 (498)									3.60 (1.63)
	18.5-18.9 (469-480)	477	9.5-9.8 (242.4-247.9)	20.1 (511)									3.64 (1.65)
	19.0-19.4 (482-493)	490	9.8-10.0 (248.9-254.4)	20.6 (524)									3.68 (1.67)
	19.5-19.9 (495-506)	503	10.1-10.3 (255.4-260.9)	21.1 (537)									3.75 (1.70)

Notes:

1. Dimensions are in inches (mm) and lbs (kg).
2. Dimensions are for general information only, all critical dimensions should be verified by requesting a certified print.
3. For larger sizes contact HYDAC Accessories Group

BAND STRAP CLAMPS

HRHZ, HRHZZ Series

Cylinder / Tube Clamp

Swivel Bolt / DIN 3015 Combination Clamps



Description

Clamps for mounting piping to cylindrical components, carbon or stainless steel, PP or PA, with or without rubber profile.

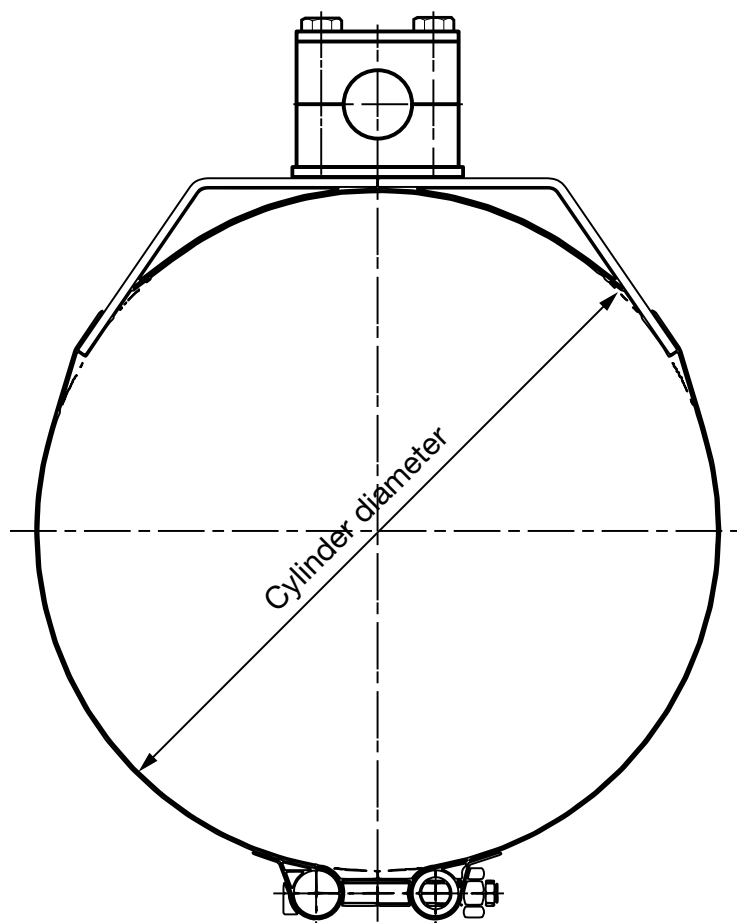
Features

- The combination of swivel bolt prism clamp and standard DIN 3015
- Used to mount lines to hydraulic cylinders
- Prevents welding metal and heat from entering hydraulic cylinders

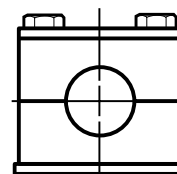
Model Code

	HRHZ	12	/	3S	A	/	PP	ST	M	ZN
Series										
HRHZ	= HY-ROS clamp for cylinders									
HRHZZ	= HY-ROS clamp for cylinders w/PE insert									
Size										
(According to dimensions)										
Clamp Size										
L	= DIN 3015 Part 1, size 1-6									
S	= DIN 3015 Part 2, size 1-4									
Z	= DIN 3015 Part 3, size 1-5									
Type										
A	= standard									
Diameter, Cylinder										
Diameter, Pipe										
Material of Clamp Jaws										
PP	= polypropylene									
PA	= polyamide									
Material of Steel Part										
ST	= Zinc Plated Steel									
A2	= Stainless Steel (on request)									
A4	= Stainless Steel (on request)									
Thread Type										
M	= Metric Thread									
Plating of Steel Parts										
ZN	= Zinc Plated									

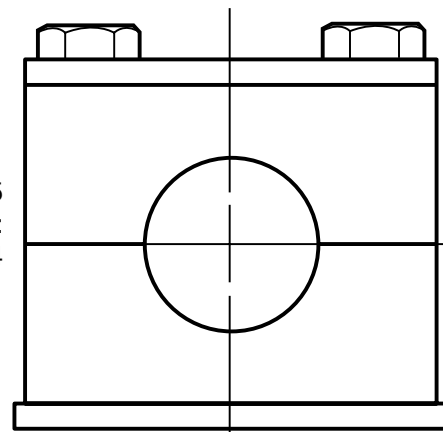
Dimensions



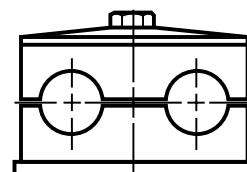
DIN 3015
Part 1:
size 1-6



DIN 3015
Part 2:
size 1-4



DIN 3015
Part 3:
size 1-5



Size	Cylinder ϕD (range) [mm]
7	67 - 88
8	89 - 99
9	100 - 114
10	115 - 140
11	141 - 169
12	170 - 194
13	195 - 220
14	221 - 274
15	275 - 299

Note: Other materials on request.

BAND STRAP CLAMPS

HRGPS, HRGPT, HRGPSU Series

Swivel Bolt Prism Clamp



Description

The combination of swivel bolt clamping band and swivel bolt prism clamp allows for many variations in order to mount pipes, accumulators or other cylindrical components securely. These are now part of our standard product offering allowing for fast delivery.

Features

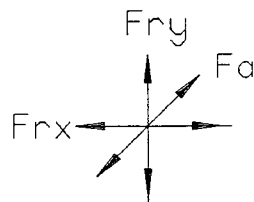
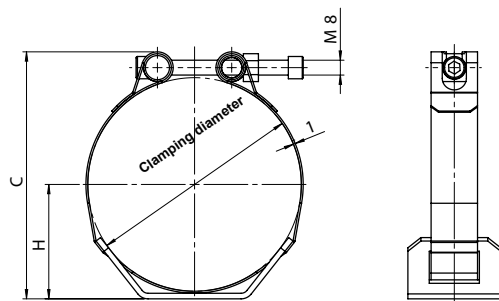
- Fast radial mounting
- Quick release system
- Variable positioning of the locking parts

Model Code

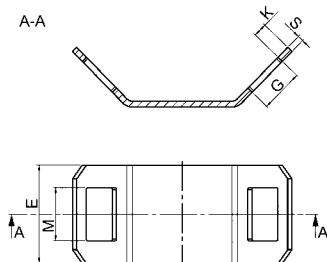
	HRGPS	0	A	91-96 /94	ST
Series					
HRGPS=	Without Inlay				
HRGPST=	With PE Inlay				
HRGPSU=	With Rubber Inlay				
Group					
0-1	Refer to Table				
Model					
A					
A/AV					
Diameter Range					
(Refer to Table)					
Material of Steel Part					
ST	= Zinc Plated Steel				
A2	= 304 Stainless Steel				

Dimensions

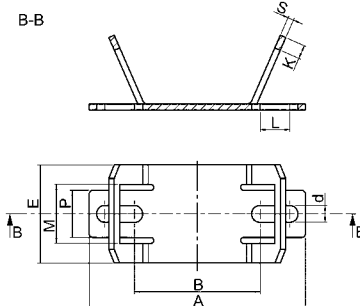
Model A



Prism model A



Prism model AV



Stress factors

Size	Clamping diameter [mm]	Fry [N]	Fr _x [N]	Fa [N]	Tightening torque [Nm]*
0	67 - 138	450	450	350	max. 17
1	139 - 300	1000	630	630	max. 17

* Notice: double security against deformation

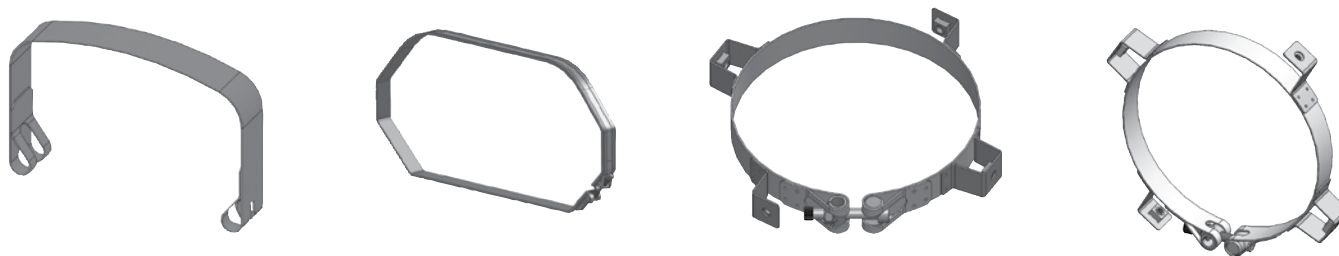
Size	Model	Clamping Diameter [mm]	Type	H [mm]	Cmax	E [mm]	M [mm]	S [mm]	K [mm]	G [mm]	A [mm]	B [mm]	d [mm]	L [mm]	P [mm]	Material	Weight [kg/piece] A / AV
0	A / AV	67 - 72	70	37.5 - 40.0	93	50	27/30	3	7	22	110	64	8.5	15	24	ST	0.25 / 0.26
		73 - 78	76	40.5 - 43.0	99												0.26 / 0.26
		79 - 84	82	43.5 - 46.0	105												0.26 / 0.27
		85 - 90	88	46.5 - 49.0	111												0.26 / 0.27
		91 - 96	94	49.5 - 52.0	117												0.27 / 0.27
		97 - 102	100	52.5 - 55.0	123												0.27 / 0.28
		103 - 111	106	55.5 - 59.5	132												0.27 / 0.28
		112 - 120	115	60.0 - 64.0	141												0.28 / 0.29
		121 - 129	124	64.5 - 68.5	150												0.29 / 0.29
		130 - 138	133	69.0 - 73.0	159												0.29 / 0.30
1	A	139 - 147	142	73.5 - 77.5	168	50	27	3	13	22	-	-	-	-	-	ST	0.41
		148 - 156	151	78.0 - 82.0	177												0.42
		157 - 165	160	82.5 - 86.5	186												0.42
		166 - 174	169	87.0 - 91.0	195												0.43
		175 - 183	178	91.5 - 95.5	204												0.44
		184 - 192	187	96.0 - 100.0	213												0.44
		193 - 201	196	100.5 - 104.5	222												0.44
		202 - 210	205	105.0 - 109.0	231												0.45
		211 - 219	214	109.5 - 113.5	240												0.46
		216 - 224	219	112.0 - 116.0	245												0.47
		220 - 228	223	114.0 - 118.0	249												0.48
		228 - 236	231	118.0 - 122.0	257												0.48
		238 - 246	241	123.0 - 127.0	267												0.48
		247 - 255	250	127.5 - 131.5	276												0.49
		256 - 264	259	132.0 - 136.0	285												0.49
		265 - 273	268	136.5 - 140.5	294												0.50
		274 - 282	277	141.0 - 145.0	303												0.50
		283 - 291	286	145.5 - 149.5	312												0.51
		292 - 300	295	150.0 - 154.0	321												0.52

BAND STRAP CLAMPS

Special Straps

Prebent Straps Tailored to Your Needs

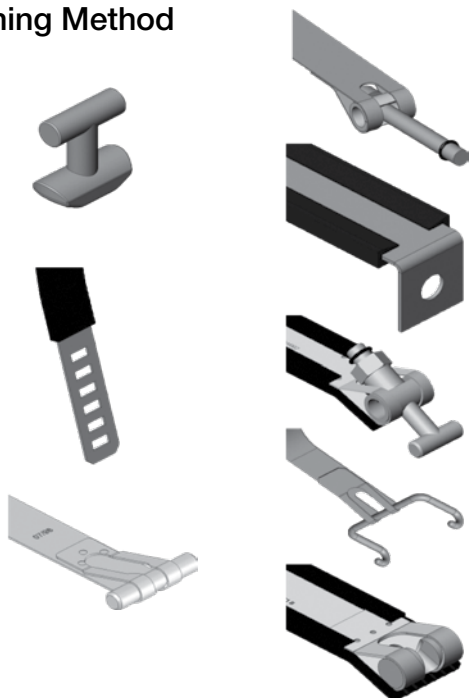
Special pre-bent band straps with options to weld custom attachment points formable to almost any geometry available to tailor a custom solution for your specific mounting project.



Connectors, Bases & Attachments/Fixtures*

Additional components for mounting pipes and hoses

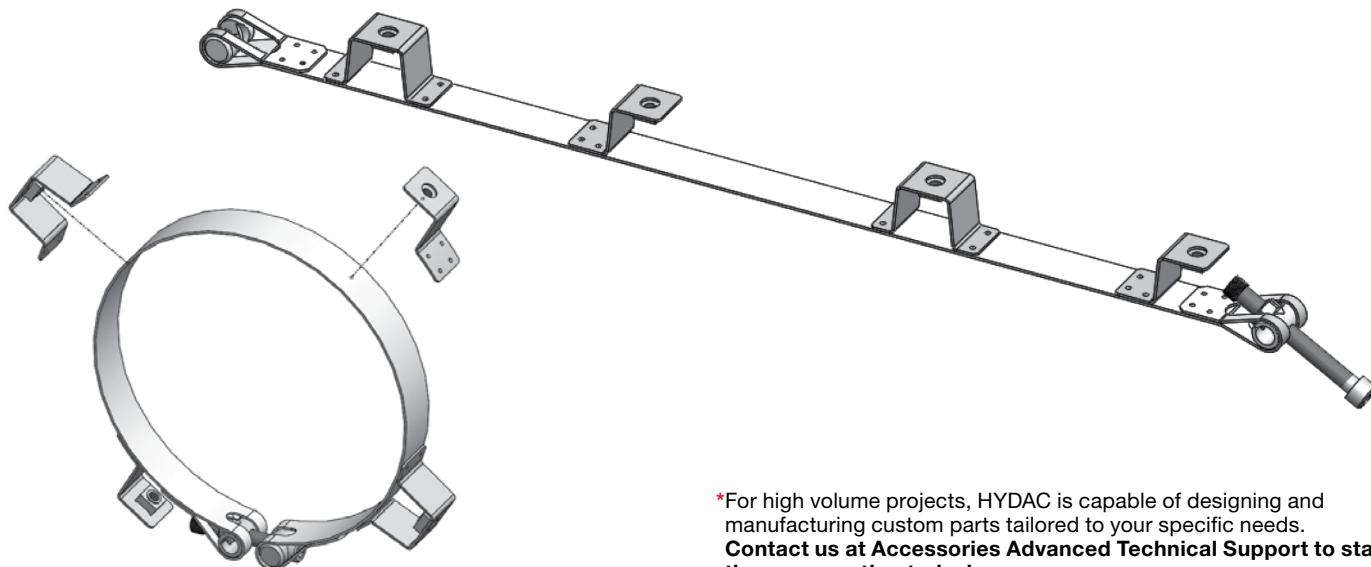
Fastening Method



Bases



Attachments and Fixtures for guiding and mounting other components



*For high volume projects, HYDAC is capable of designing and manufacturing custom parts tailored to your specific needs.
Contact us at Accessories Advanced Technical Support to start the conversation today!